



For Immediate Release
October 28, 2016

Contact:

Reese McCranie
Director of Policy and Communications
(404) 886-2334
reese.mccranie@atl.com

Andrew Gobeil
Deputy Director Policy and Communications
(404) 227-2884
andy.gobeil@atl.com

ATLNext Construction Ongoing; Canopy Installation Project Continues

*Lane closures will have minimal operational impact on passengers;
project will enhance customer experience and transform Domestic Terminal exterior*

ATLANTA – As part of the \$6 billion, 20-year capital improvement plan dubbed ATLNext, Airport officials today reminded travelers that pre-construction work on the new canopies at Hartsfield-Jackson Atlanta International Airport (ATL) is ongoing. This work will have a minimal impact on customers dropping off and picking up passengers, and there will be constant access to parking facilities and pedestrian crossings.

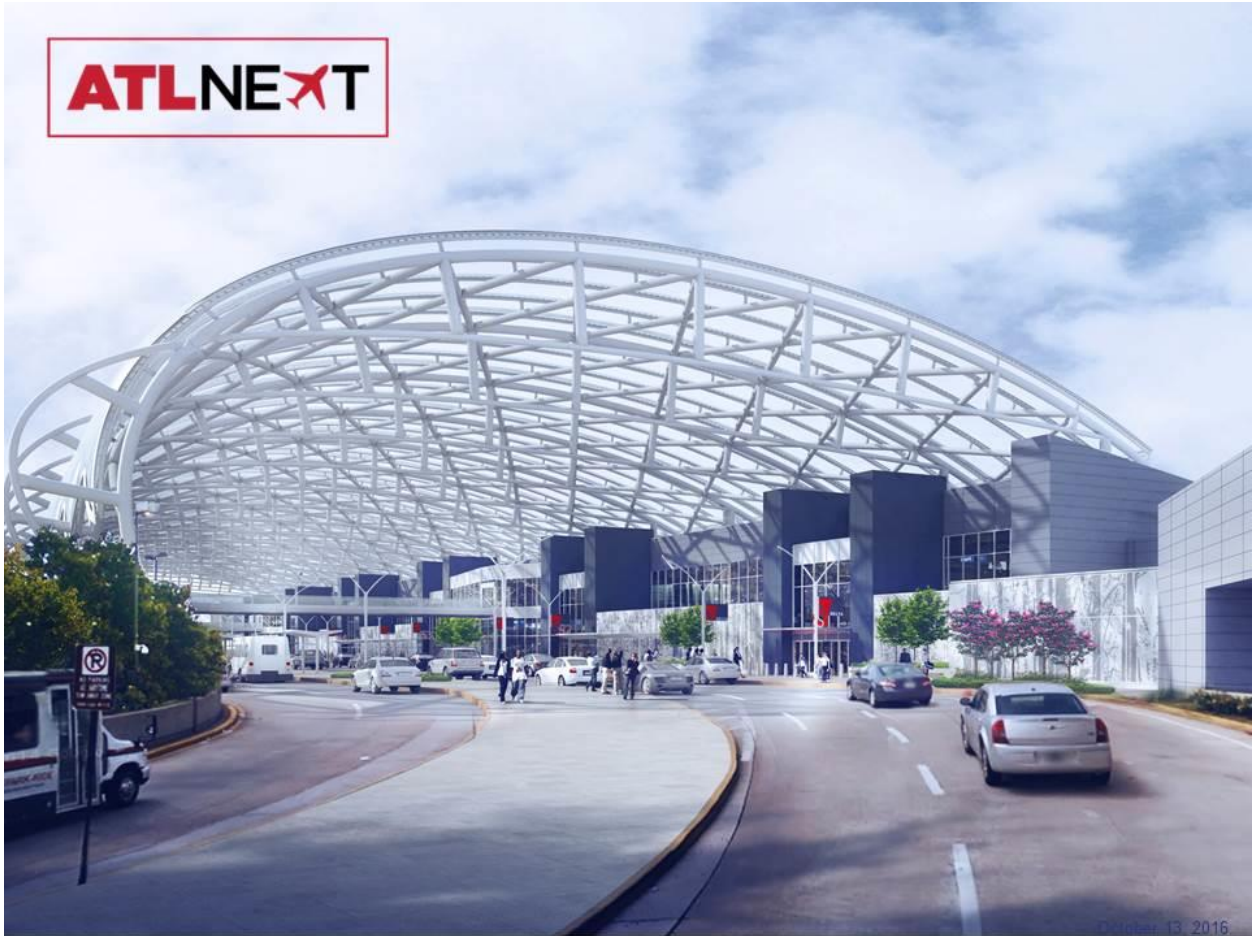
On Sunday, Oct. 30, crews at the South Terminal will close one exterior lane and one lane on the lower level. The first round of work began two weeks ago at the North Terminal with the closure of two outer lanes in front of the terminal and the partial closure of the lower roadway bus lane and sidewalk. ATL officials are collaborating with Atlanta police and all Airport partners to ensure stakeholders are informed of the changes and given alternate options to mitigate impacts.

The work will lead to the installation of these canopies, which will span both the North and South terminals and connect to both parking decks. Once finished in late 2018, the canopies will provide a dramatic entrance to the Domestic Terminal while enhancing the traveler experience. The canopies will protect customers from the elements and include new pedestrian bridges to the terminal building. Measuring nearly three football fields in length at 870 feet, the canopies will be 185 feet wide and 65 feet high at its tallest point. They will transform the look and feel of the terminal building – and even illuminate at night.

During this project, workers also will clear areas adjacent to the roadway, relocate utilities, build temporary elevators and construct temporary pedestrian ramps.

For more information on ATLNext, please visit, <http://next.atl.com>. Attached are graphics of the planned work. For a link to an animated rendering of the completed canopy, go to <https://vimeo.com/158471759>

###

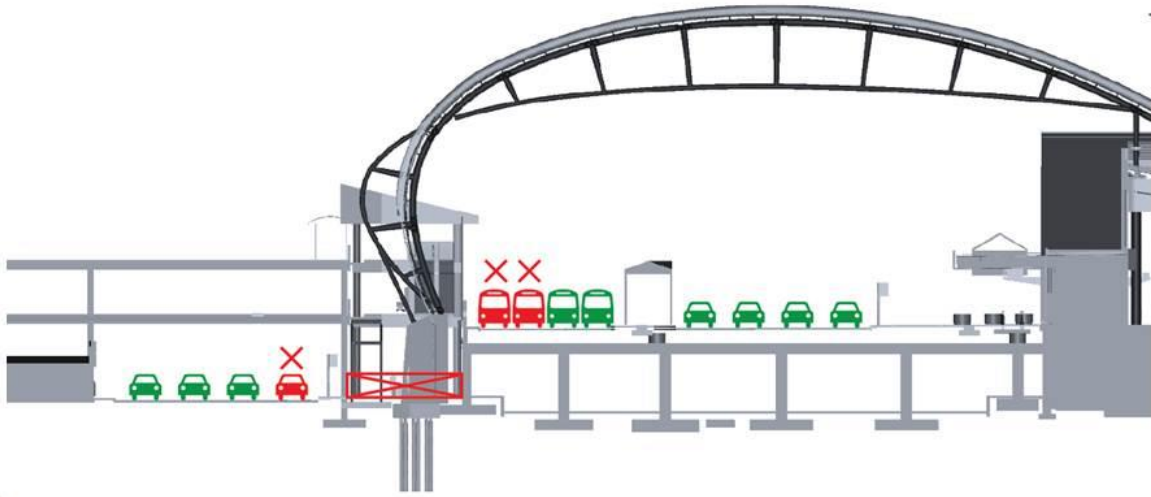


Canopy Construction October 2016 – December 2018



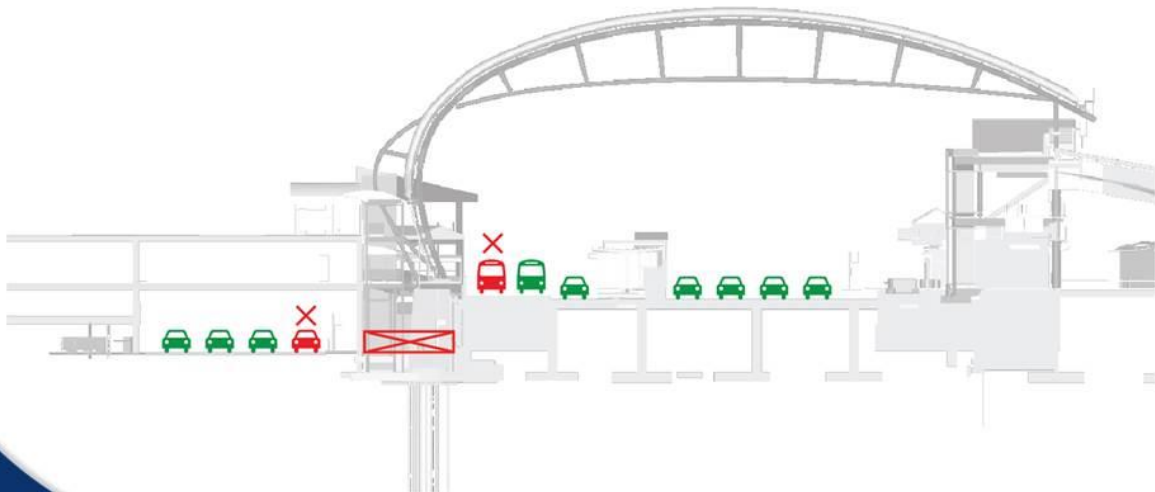
North Terminal Lane Closures

beginning October 15, 2016



South Terminal Lane Closures

beginning October 30, 2016



Hartsfield-Jackson Atlanta International Airport

Hartsfield-Jackson (ATL) is the world's most traveled and most efficient airport, serving more than 101 million passengers annually with nonstop service to more than 150 U.S. destinations and nearly 70 international destinations in more than 45 countries. ATL boasts a direct economic impact of \$34.8 billion in metro Atlanta and a total direct economic impact of \$70.9 billion in Georgia. The Airport is the largest employer in Georgia, with more than 63,000 employees. The Airport is a frequent recipient of awards of excellence for concessions, operations, sustainability, architectural engineering, and construction. ATL is now in the midst of a \$6 billion capital improvement plan, ATL Next, that will modernize the domestic terminal and concourses, create new parking decks, construct a 300-room hotel, Class A commercial office space, add a new runway, new concourse and expand cargo facilities. For more information, go to www.atlanta-airport.com.

NOTE TO NEWS EDITORS

For HD broadcast quality b-roll of airport operations, events and generic interior/exterior shots, click here to view our ATL Video Newsroom: <https://vimeo.com/atlairport/channel>