

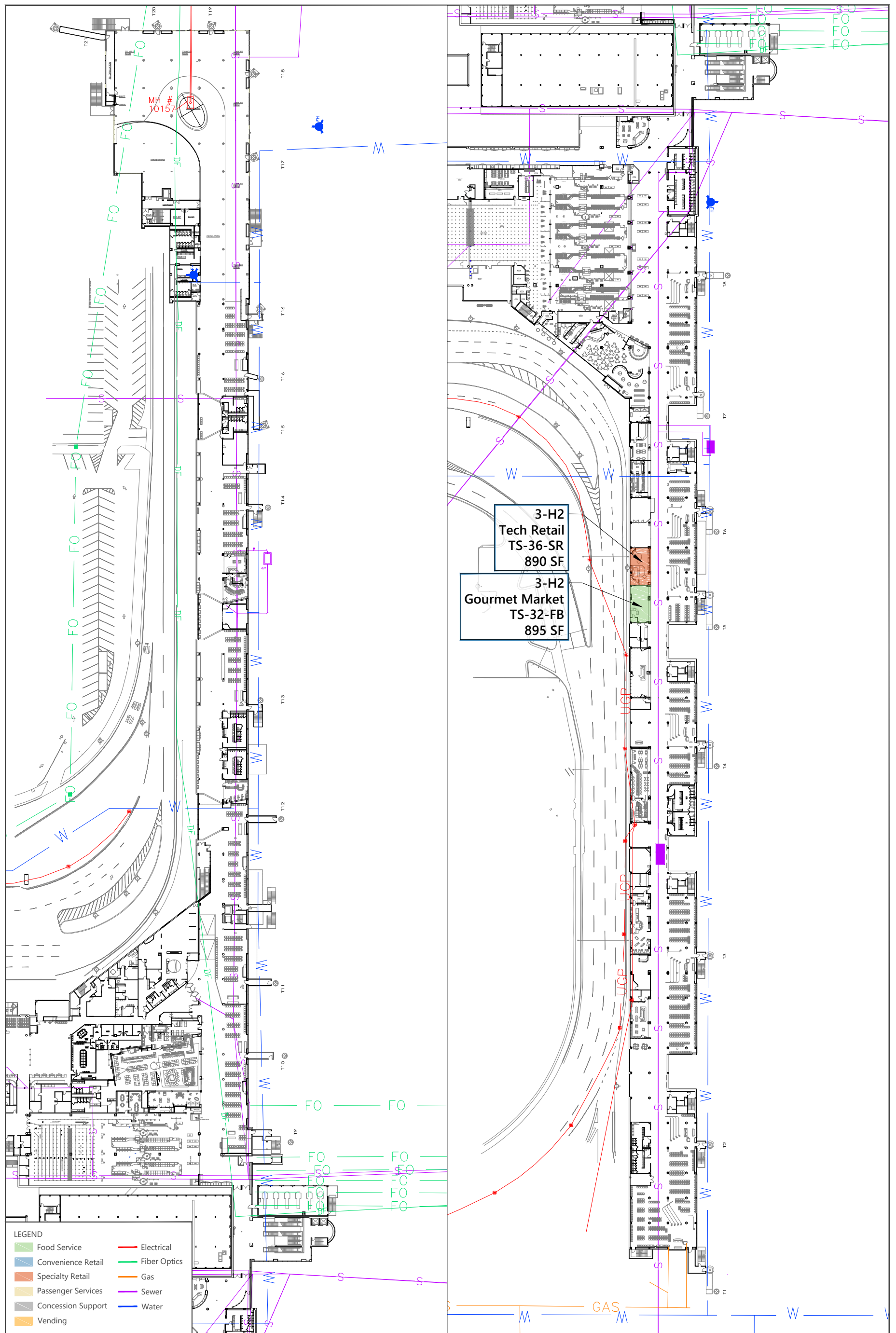
LEGEND

| | |
|--|---|
| ■ Food Service | — Electrical |
| ■ Convenience Retail | — Fiber Optics |
| ■ Specialty Retail | — Gas |
| ■ Passenger Services | — Sewer |
| ■ Concession Support | — Water |
| ■ Vending | |

SOURCE: See Documentation Guide on proper sourcing.

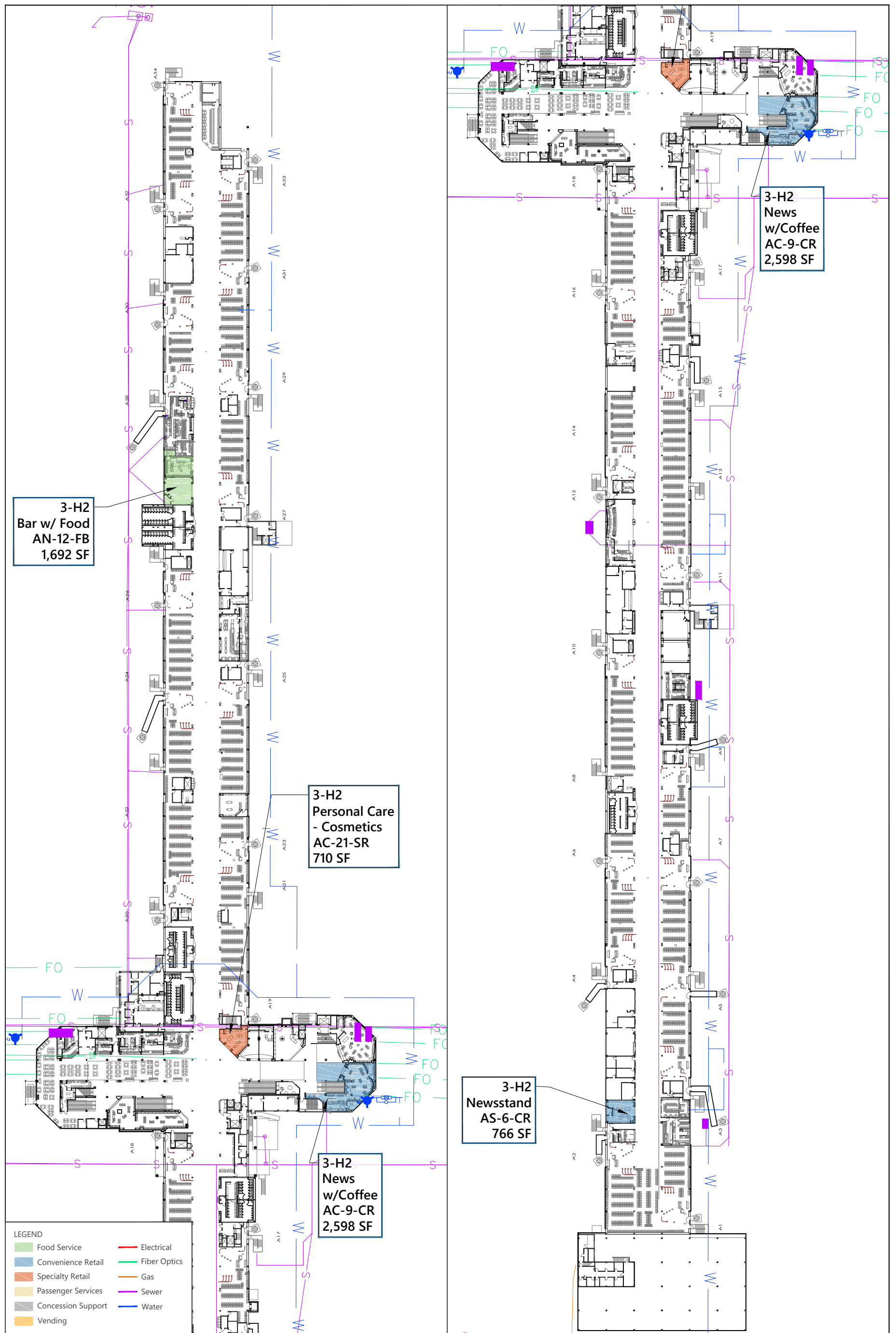


EXHIBIT XX
CONCESSION MASTER PLAN PHASE 3 PACKAGE 3-H2
DOMESTIC TERMINAL-LEVEL 2



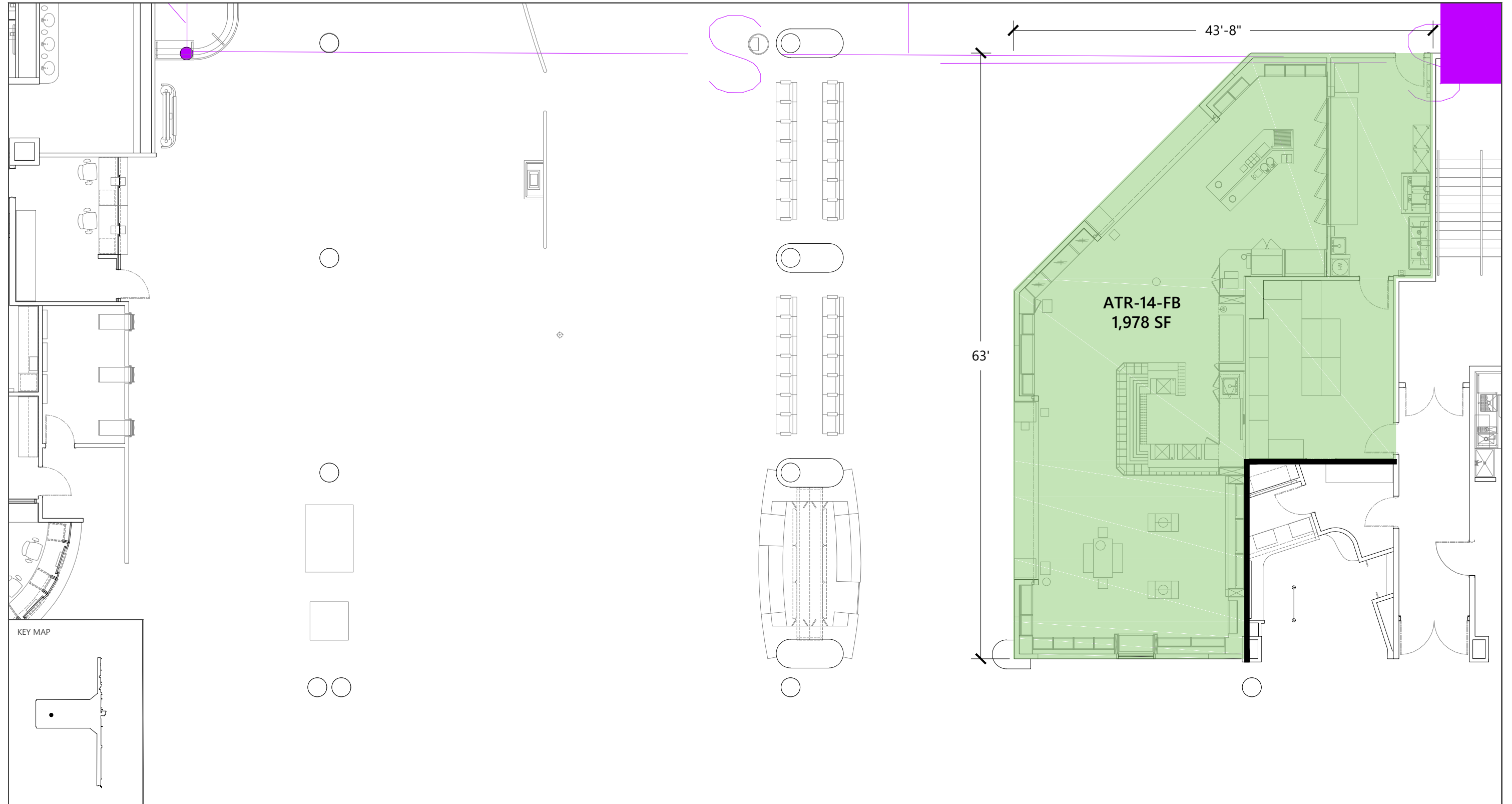
SOURCE: See Documentation Guide on proper sourcing.





SOURCE: See Documentation Guide on proper sourcing.

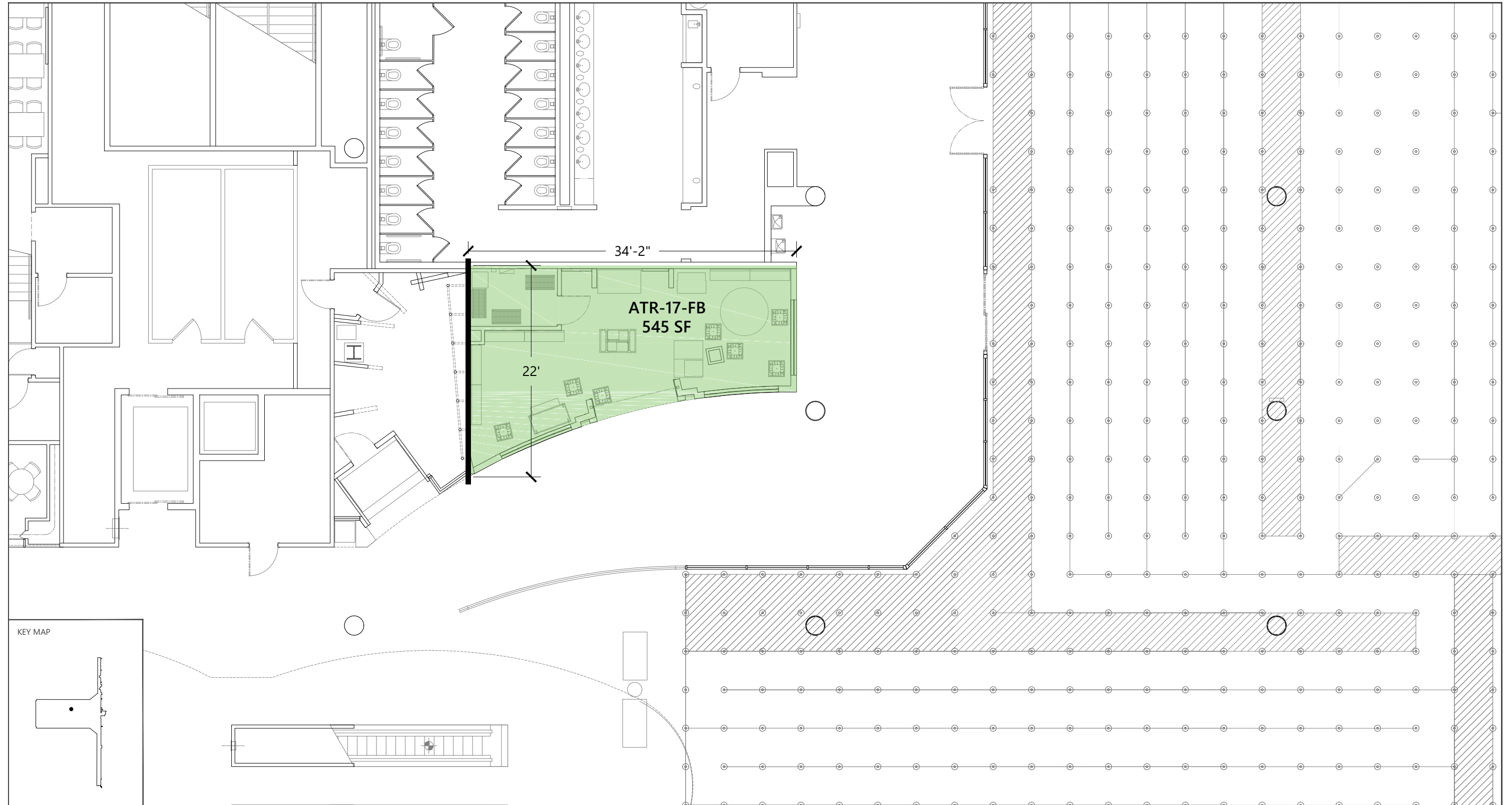




SOURCE: Ricondo & Associates, Inc., May 2023.

EXHIBIT XX

3-H2 Branded Deli
ATR-14-FB

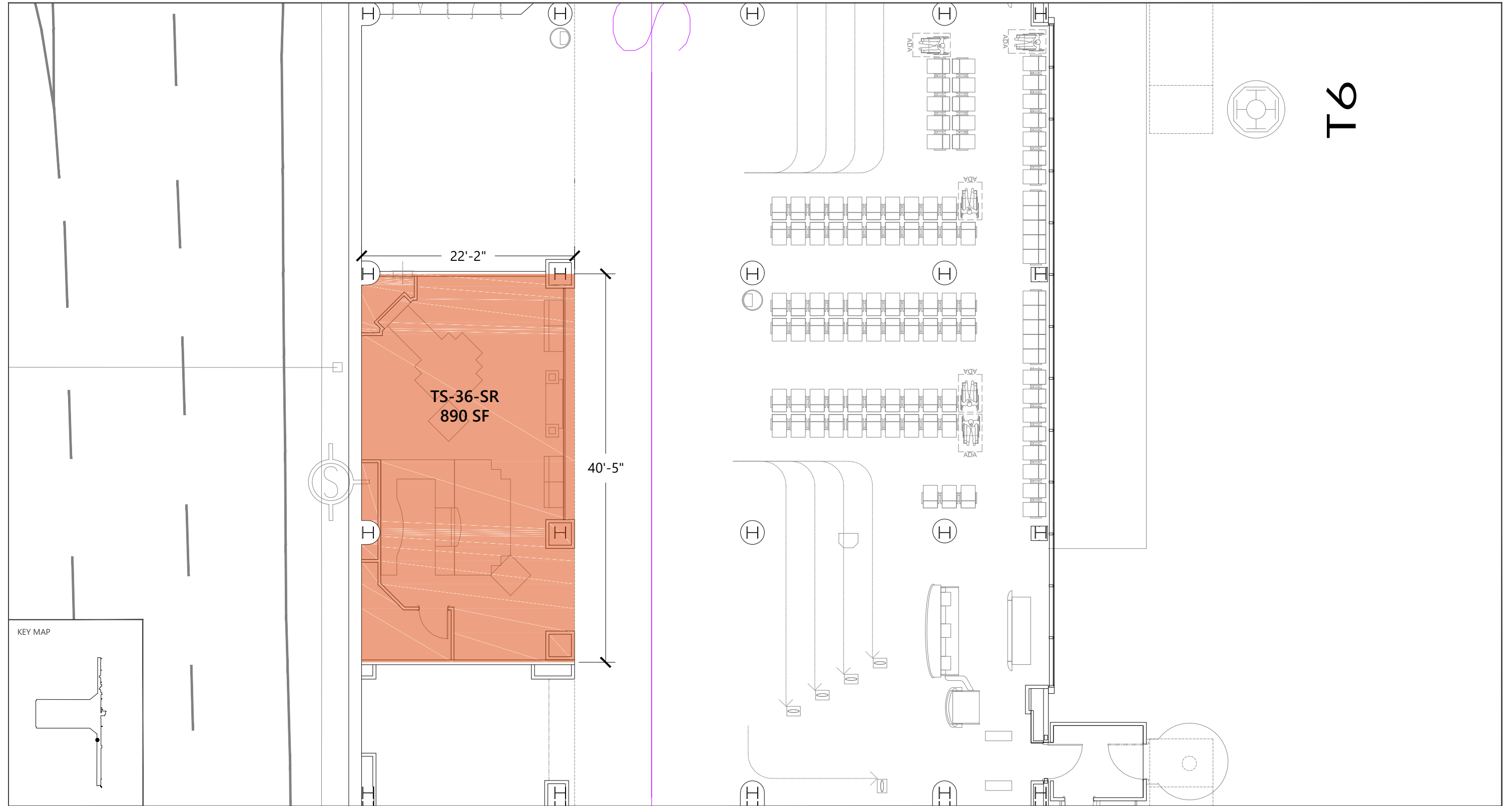


SOURCE: Ricondo & Associates, Inc., May 2023.

EXHIBIT XX



3-H2 Gourmet Market-Pre-packaged
ATR-17-FB

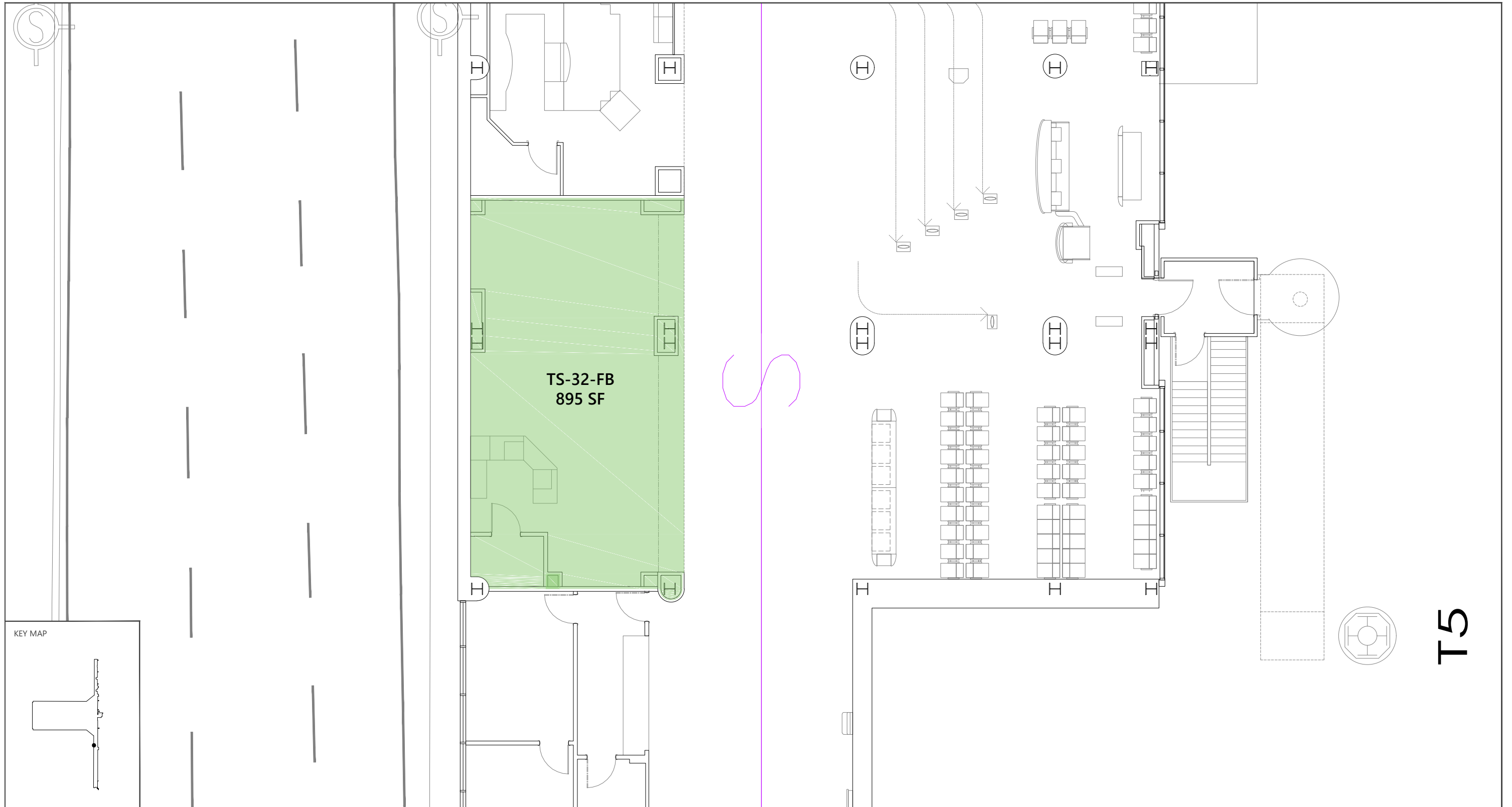


SOURCE: Ricondo & Associates, Inc., May 2023.



EXHIBIT XX

3-H2 Tech Retail
TS-36-SR

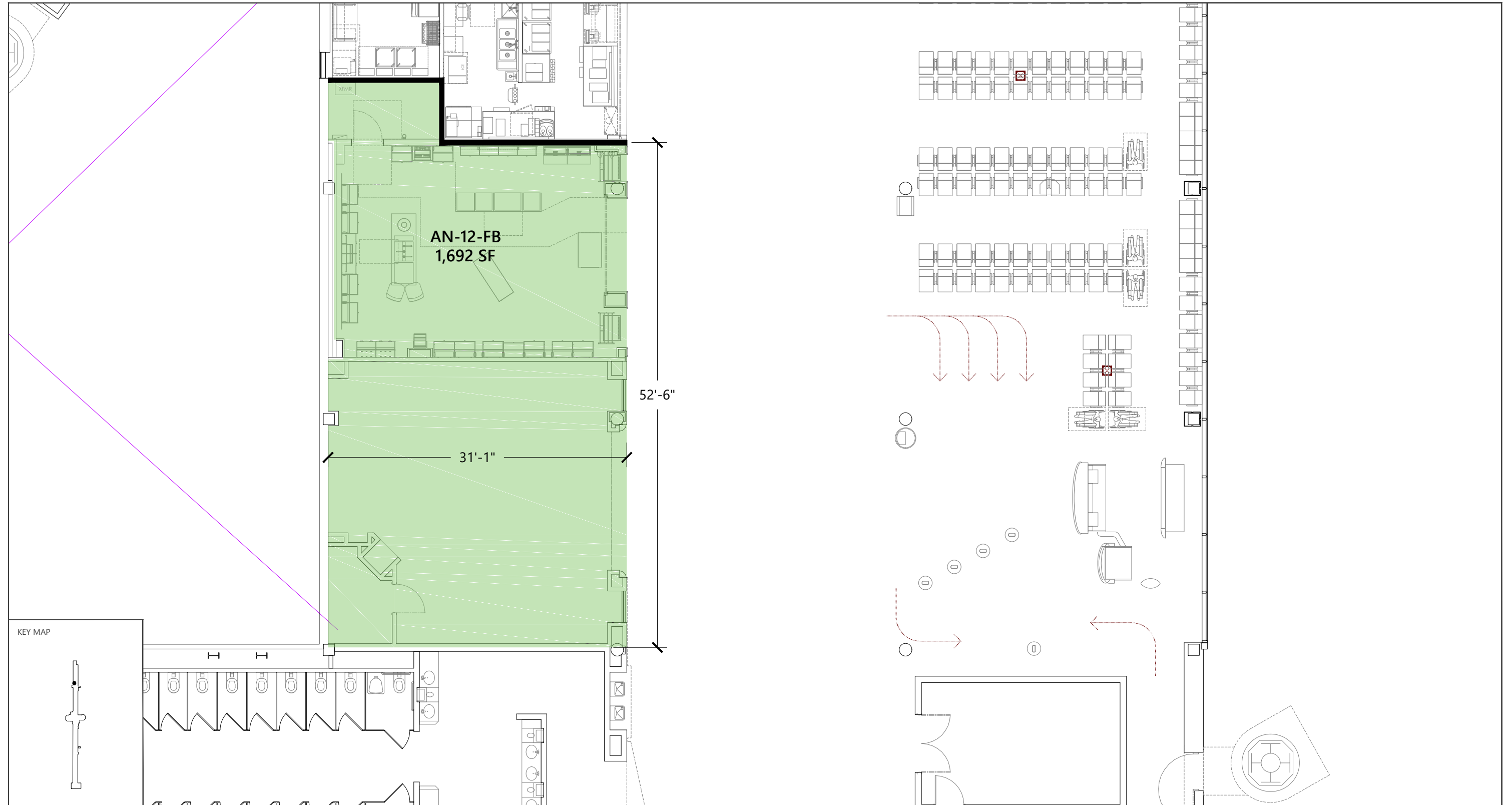


SOURCE: Ricondo & Associates, Inc., May 2023.

EXHIBIT XX



3-H2 Gourmet Market
TS-32-FB



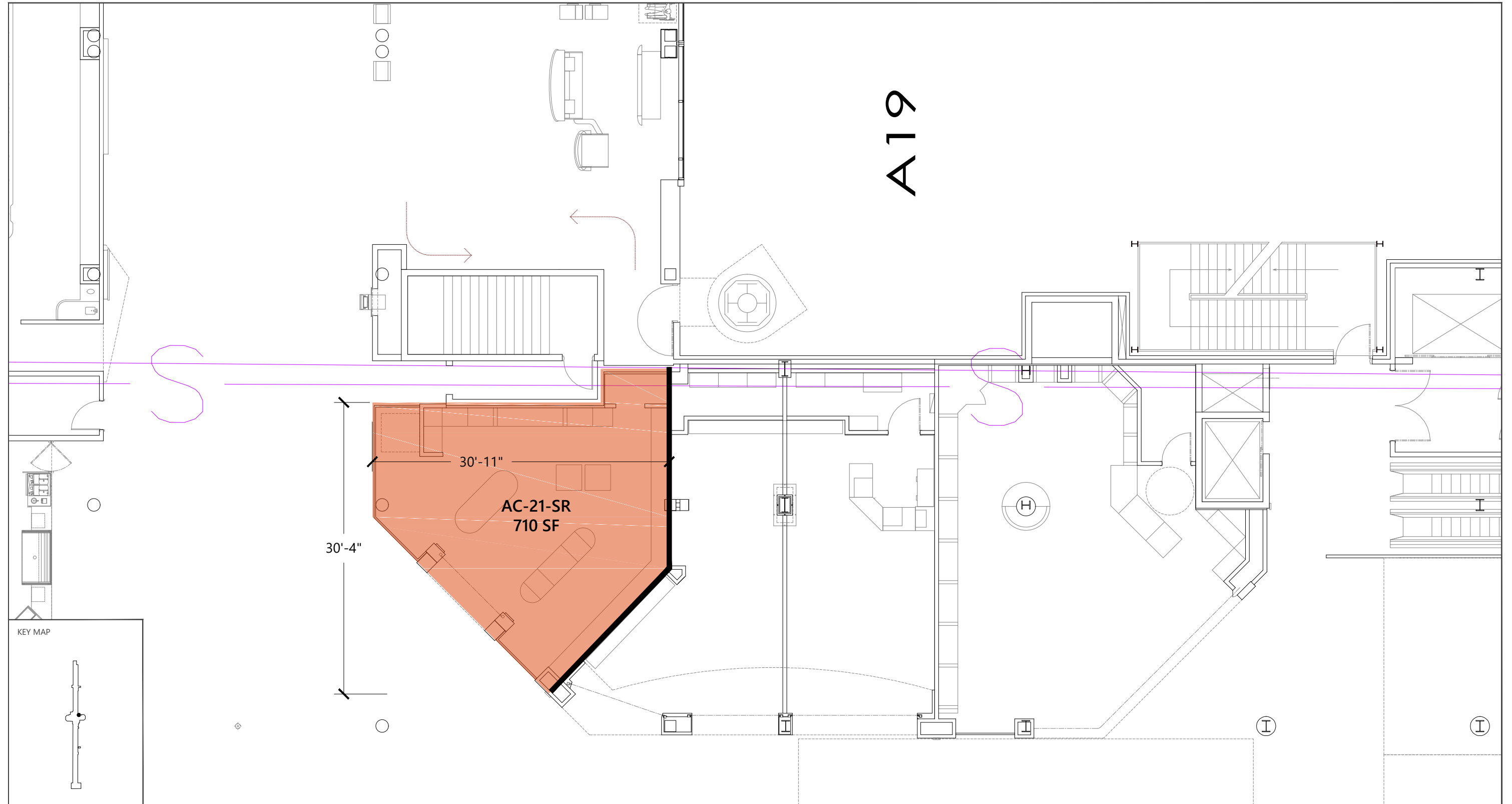
SOURCE: Ricondo & Associates, Inc., May 2023.

EXHIBIT XX

3-H2 Bar with Food
AN-12-FB



Drawing: P:\Project-Atlanta\ATL\On Call Planning\Task 297 - Concessions Consulting\30-Terminal\04-Drawings&Models\Proposed Concession Plan.dwg\Layout: AN-12-FB Plotted: May 26, 2023, 11:19AM



SOURCE: Ricondo & Associates, Inc., May 2023.



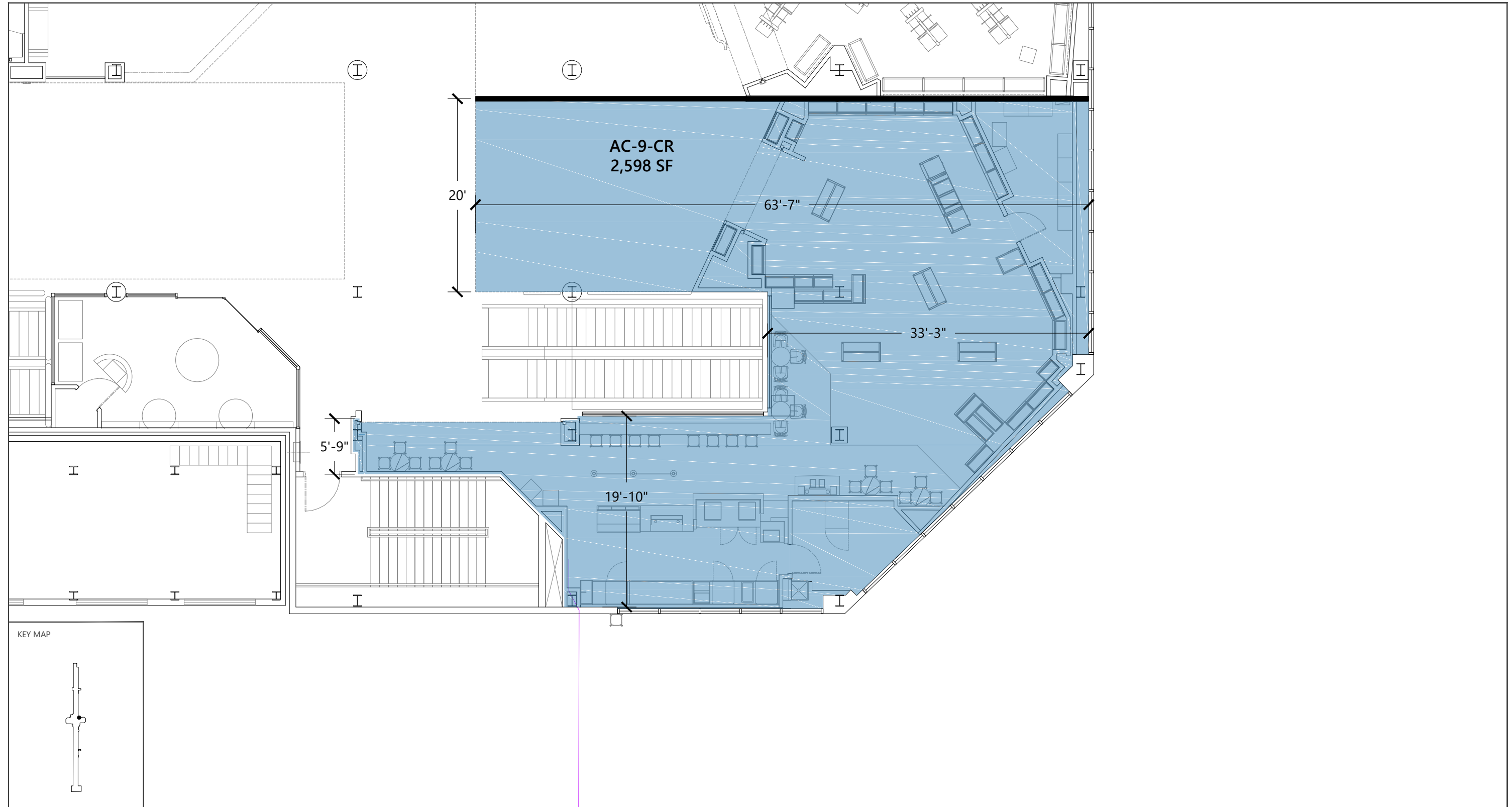
Drawing: P:\Project-Atlanta\ATL\On Call Planning\Task 297 - Concessions Consulting\30-Terminal\04-Drawings&Models\Proposed Concession Plan.dwg\Layout: AC-21-SR Plotted: May 26, 2023, 11:21AM

Title of Document

EXHIBIT XX

3-H2 Personal Care - Cosmetics
AC-21-SR

Chapter Title

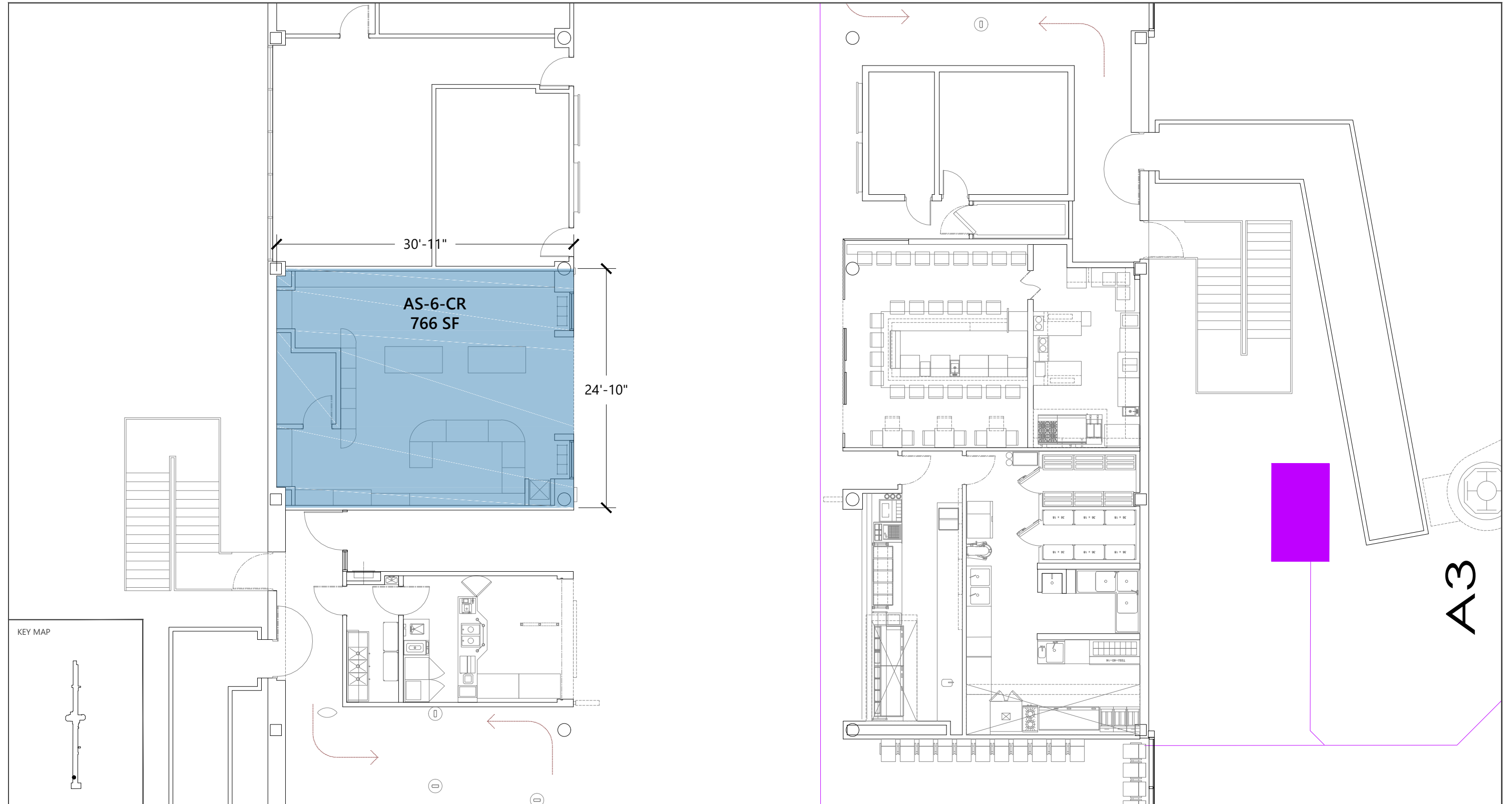


SOURCE: Ricondo & Associates, Inc., May 2023.



EXHIBIT XX

3-H2 News with Coffee
AC-9-CR



SOURCE: Ricondo & Associates, Inc., May 2023.



Drawing: P:\Project-Atlanta\ATL\On Call Planning\Task 297 - Concessions Consulting\30-Terminal\04-Drawings&Models\Proposed Concession Plan.dwg\Layout: AS-6-CR Plotted: May 26, 2023, 11:49AM

Title of Document

EXHIBIT XX

3-H2 Newstand
AS-6-CR

A3

Chapter Title